



STATE DA VINCI DECATHLON 2017

CELEBRATING THE ACADEMIC GIFTS OF STUDENTS
IN YEARS 9, 10 & 11



ART AND POETRY

TEAM NUMBER _____

THE POWER OF WORDS & IMAGES

BACKGROUND

Author Yehuda Berg wrote:

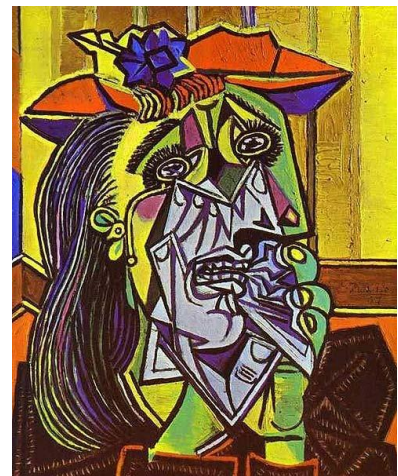
“Words are singularly the most powerful force available to humanity. We can choose to use this force constructively with words of encouragement, or destructively using words of despair. Words have energy and power with the ability to help, to heal, to hinder, to hurt, to harm, to humiliate and to humble.”

Poets employ words to engage us emotionally and intellectually, provoking us to consider their ideas and key messages. Artists have also used colour, images and composition to express their emotions to convey a significant idea.

The poet Jeff Anderson plays with the form, structure and choice of words. He conveys a powerful message through his fractured structure that uses ‘the’ to begin every word grouping and he does not have any verbs. You read his poem “The Ending” from left to right

The shouts	The anger	The tears
The breath	The hush	The silence
The stillness	The movement	The light
The door	The slamming	The dark
The guilt	The pain	The ending

The cubist painters also used a fractured abstract style to convey their meaning. The object of the painting was fractured into geometric parts and could be viewed from many angles. The art reflected the mechanisation of the new modernist industrial world. Picasso’s “Crying Woman” illustrates the style of this art movement. It could easily have been matched with the poem.



THE TASK

The team is challenged to create an original poem and artwork that reflect the fractured style of “The Ending” and Picasso’s “Crying Woman.” The poem must match the form of the poem and use no verbs. It can be longer. The artwork must be a cubist piece with geometric

shapes from different angles creating the subject. It can be 3D unlike Picasso's painting. The artwork and poem **must be** thematically, symbolically and physically connected. Please take note of the following:

- The poem and artwork must reflect the fractured style of the poem and cubist painting.
- The poem and artwork must be **closely connected** symbolically and physically.
- There must have clear ideas and a theme.

MATERIALS

- Two A4 sheets of paper
- Two A4 sheets of cardboard
- Lead pencils, coloured pencils and/or oil crayons
- Sticky tape (Use sparingly)

MARKING CRITERIA

MARKING CRITERIA	POEM					ARTWORK					
Original interpretation of the task	1	2	3	4	5	1	2	3	4	5	
Creativity of the poem and artwork	1	2	3	4	5	1	2	3	4	5	
The CLOSE thematic, symbolic and physical interconnectedness of the poetry and the cubist artwork	0	1	2	3	4	5	6	7	8	9	10
The powerful use of words and images to convey ideas and a theme	0	1	2	3	4	5	6	7	8	9	10
TOTAL											/40